

# Supplementary Information for

## Biodegradation of synthetic dyes by free and cross-linked peroxidase in microfluidic reactor

Milica Svetozarević<sup>a</sup>, Nataša Šekuljica<sup>a,\*</sup>, Antonije Onjia<sup>b</sup>, Nemanja Barać<sup>a</sup>, Marina Mihajlović<sup>a</sup>, Zorica Knežević-Jugović<sup>c</sup>, Dušan Mijin<sup>d</sup>

<sup>a</sup>*Innovation Center of the Faculty of Technology and Metallurgy, Karnegijeva 4, 11120 Belgrade,*

<sup>b</sup>*University of Belgrade, Faculty of Technology and Metallurgy, Department of Analytical Chemistry and Quality Control, Karnegijeva 4, 11000 Belgrade*

<sup>c</sup>*University of Belgrade, Faculty of Technology and Metallurgy, Department of Biochemical Engineering and Biotechnology, Karnegijeva 4, 11000 Belgrade*

<sup>d</sup>*University of Belgrade, Faculty of Technology and Metallurgy, Department of Organic Chemical Technology, Karnegijeva 4, 11000 Belgrade*

---

\* **Author address:** *Innovation Center of the Faculty of Technology and Metallurgy, Karnegijeva 4, 11120 Belgrade*

E-mail: [nsekuljica@tmf.bg.ac.rs](mailto:nsekuljica@tmf.bg.ac.rs)

## Supplementary Figure S1

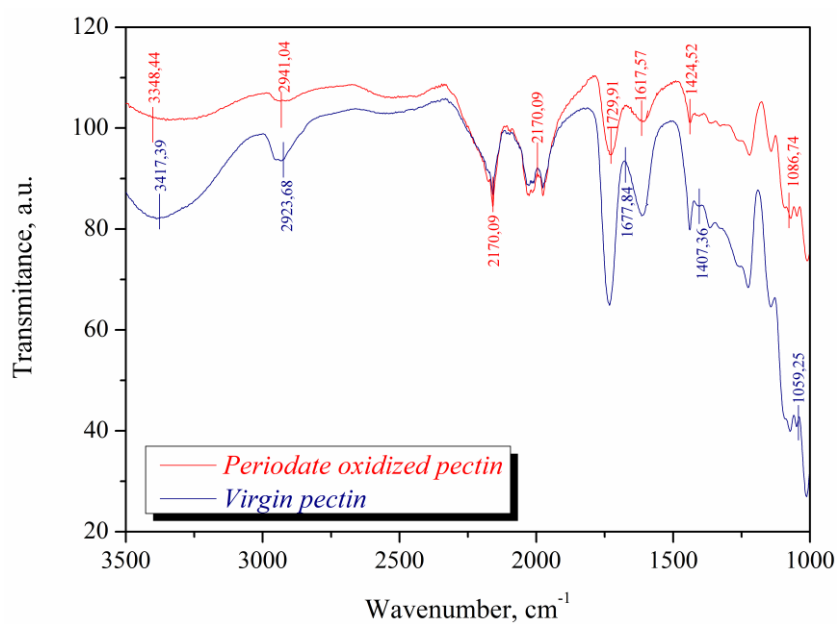


Fig. S1. FT-IR spectra of native and oxidized pectin.

## Supplementary Figure S2

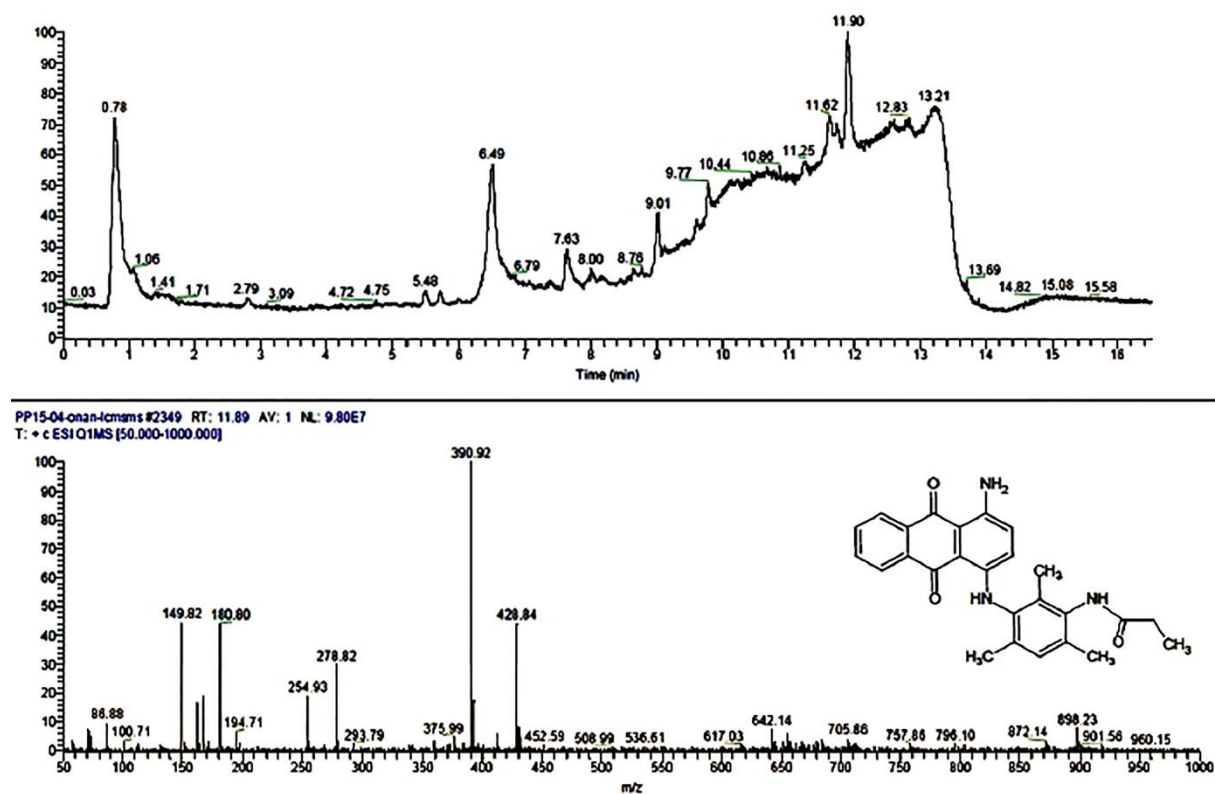
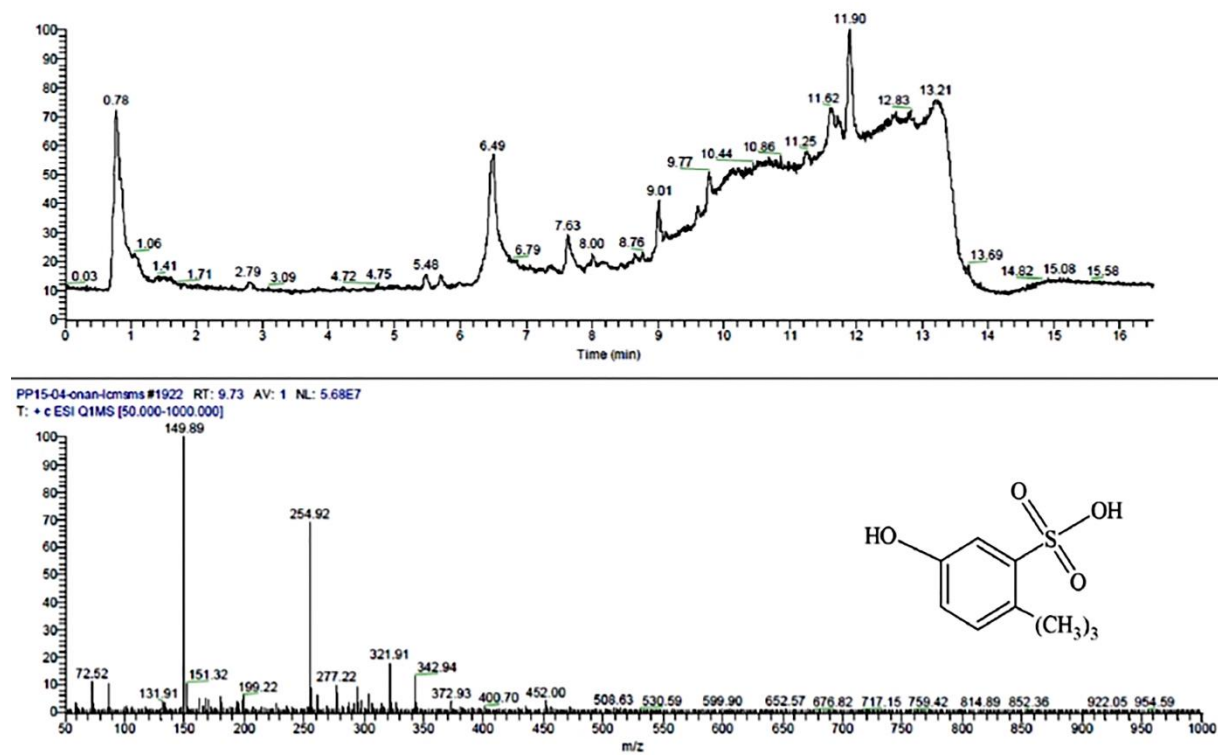


Fig. S2. The byproduct M1 identified by LC-MS analysis.

## Supplementary Figure S3

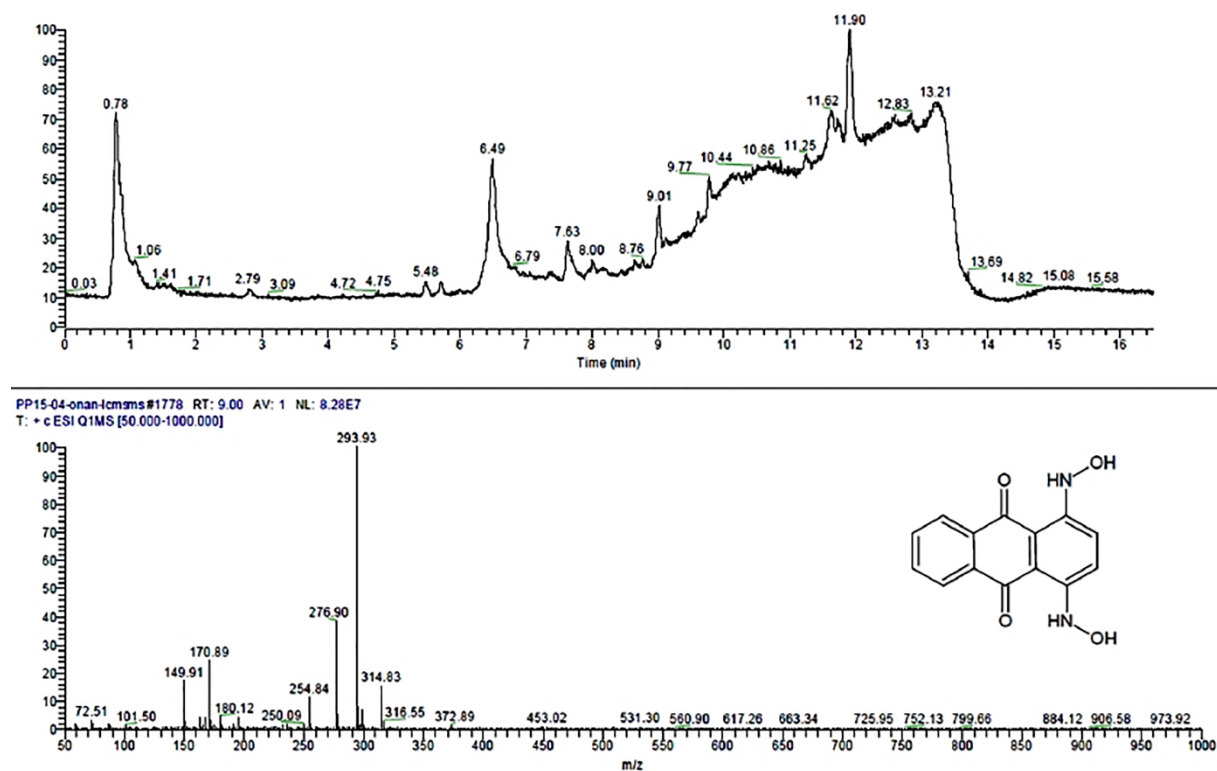
Fig. S3



**Fig. S3.** The byproduct **M2** identified by LC-MS analysis.

## Supplementary Figure S4

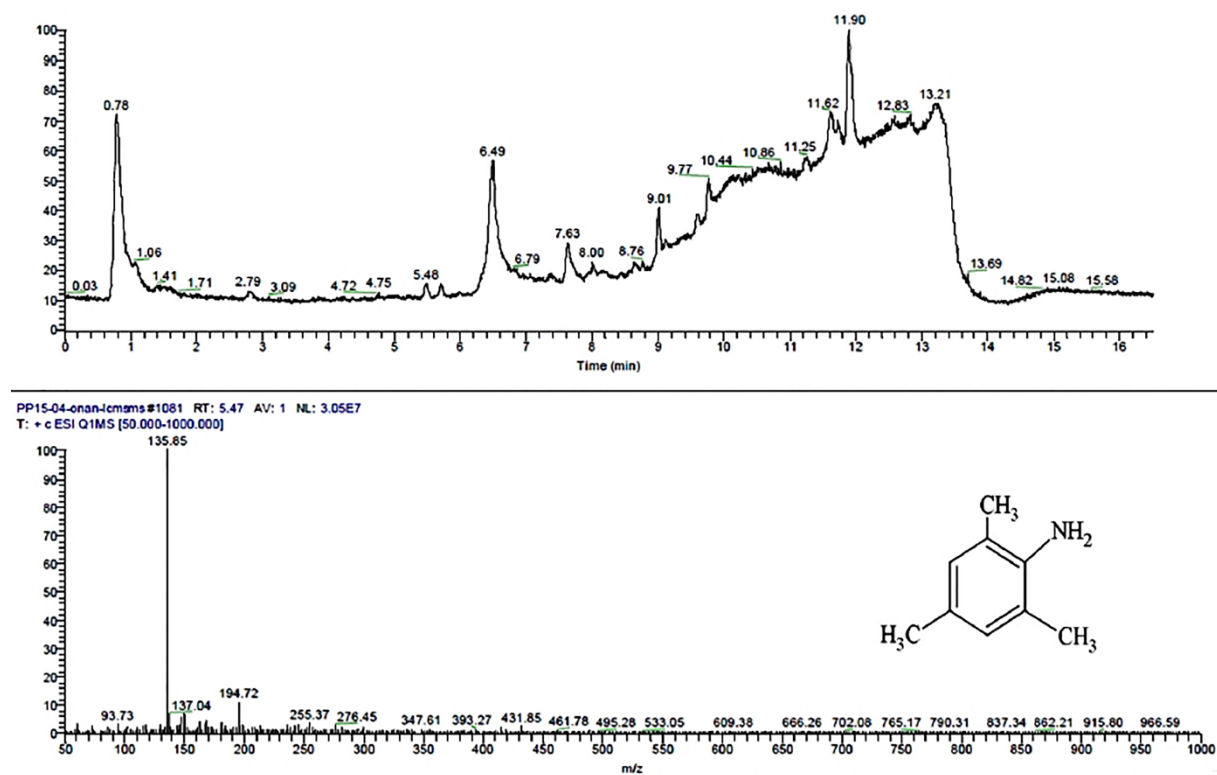
Fig. S4.



**Fig. S4.** The byproduct **M3** identified by LC-MS analysis.

## Supplementary Figure S5

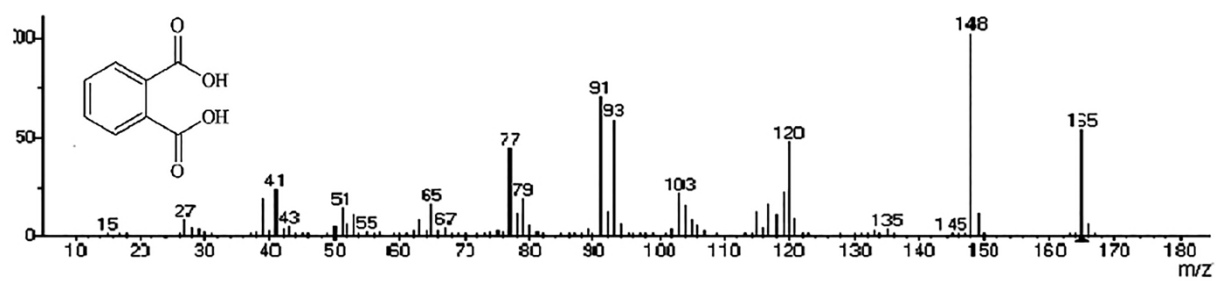
Fig.S5



**Fig. S5.** The byproduct **M4** identified by LC-MS analysis.

## Supplementary Figure S6

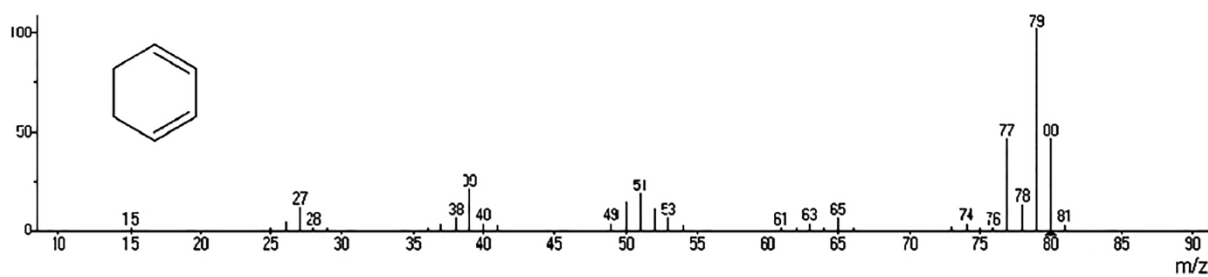
Fig.S6



**Fig. S6.** The byproduct **M5** identified by GC-MS analysis.

## Supplementary Figure S7

Fig.S7



**Fig. S7.** The byproduct **M6** identified by GC-MS analysis.

## Supplementary Figure S8

Fig.S8

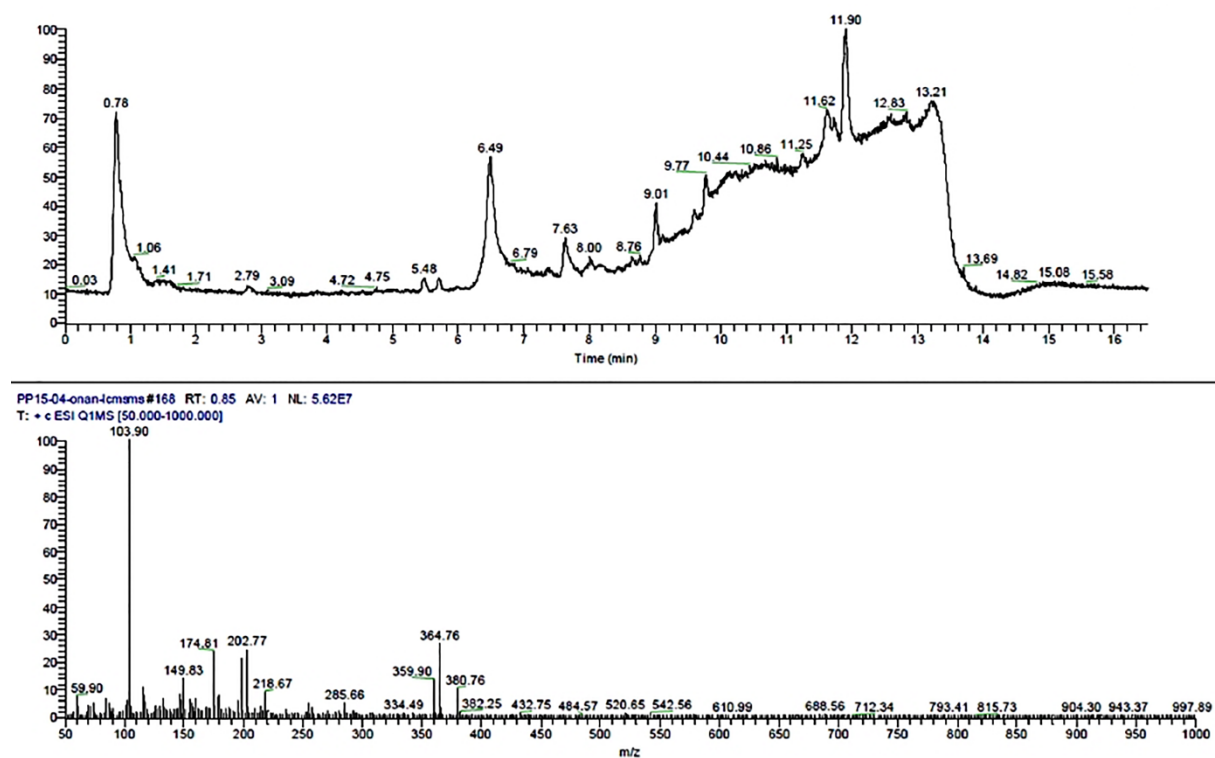
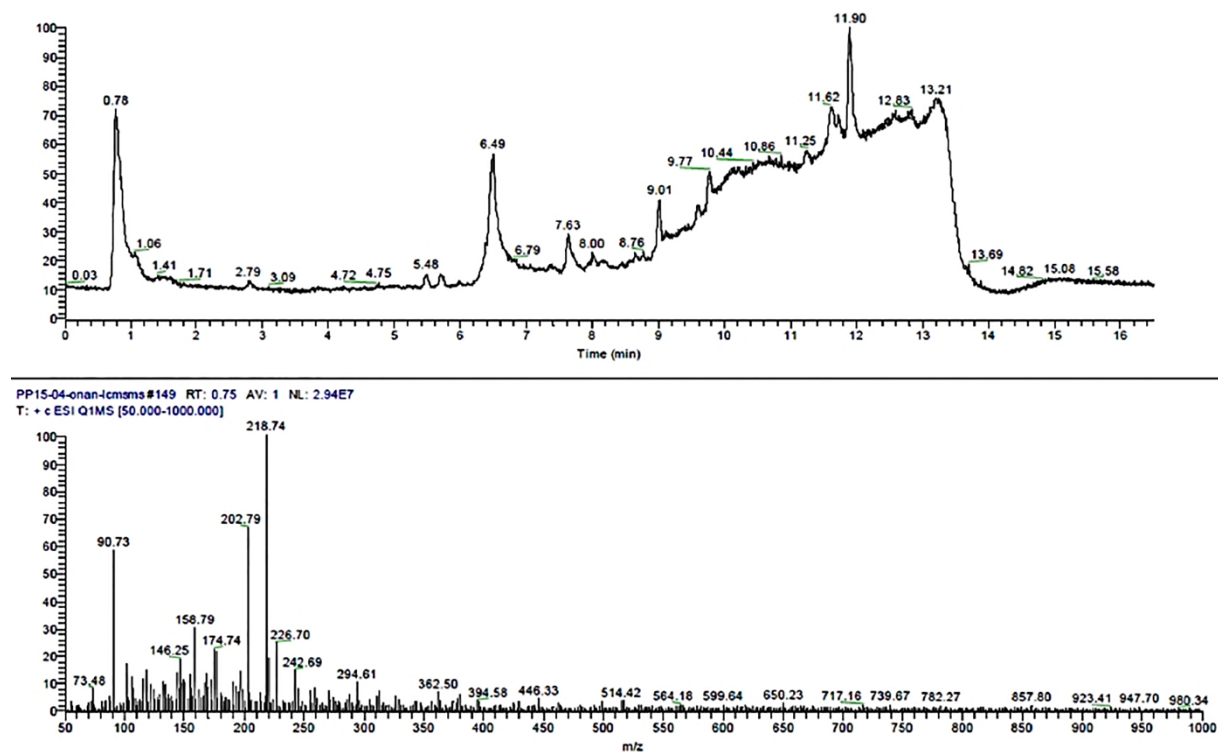


Fig. S8. The (Br) identified by LC-MS analysis.



# Supplementary Figure S9

## Fig.S9



**Fig. S9.** The  $(SO_4)^-$  identified by LC-MS analysis.